






UWHARRIE NATIONAL FOREST KODAK ROCK CLOSURE AND STABILIZATION PROPOSED ACTION MAP


 Trailhead

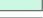
 Closure and Stabilization = 0.35 Mile


 Kodak Rock Closure = 0.85 Mile


 Motorized Trails

 Streams

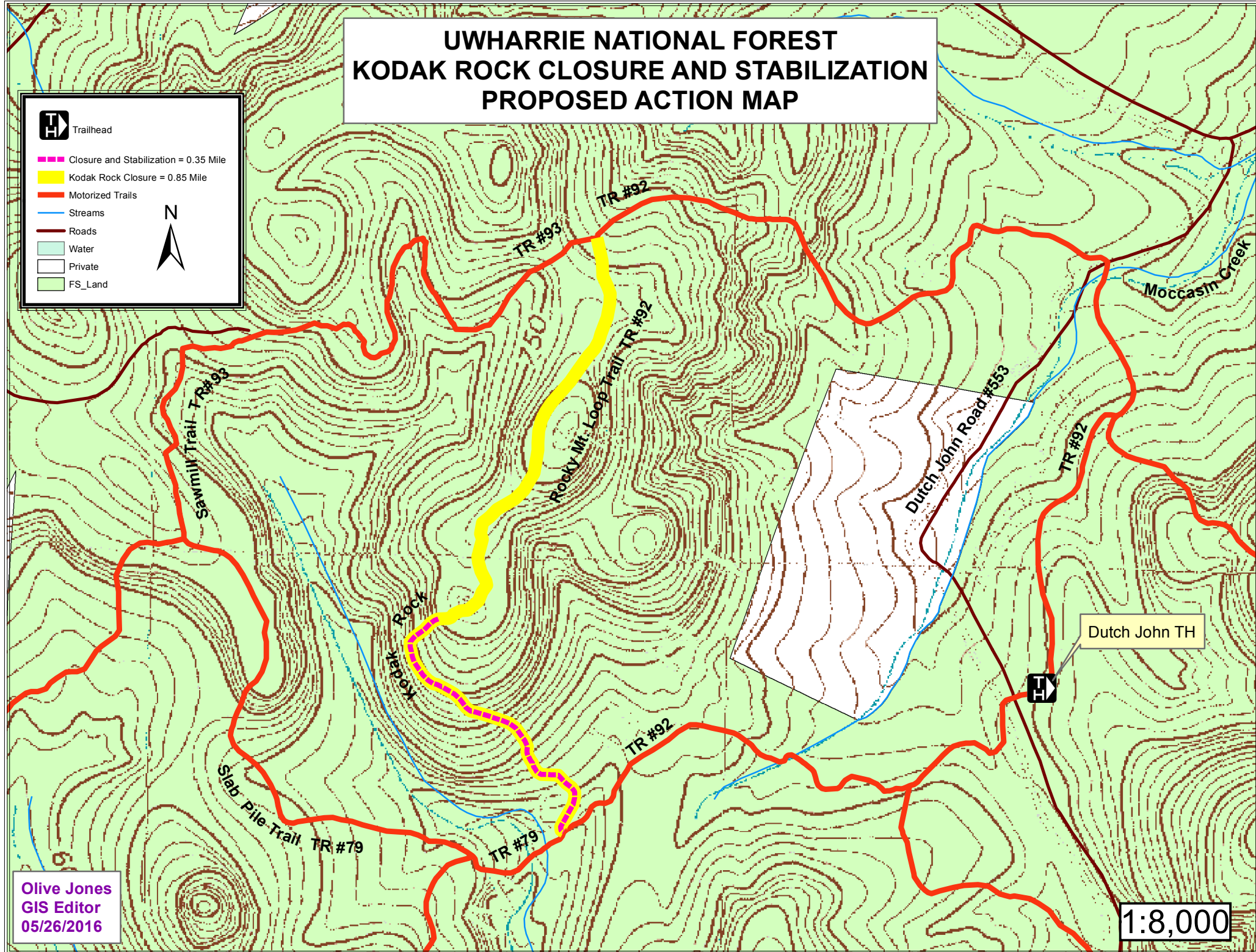
 Roads

 Water

 Private

 FS_Land

N



Olive Jones
GIS Editor
05/26/2016

1:8,000